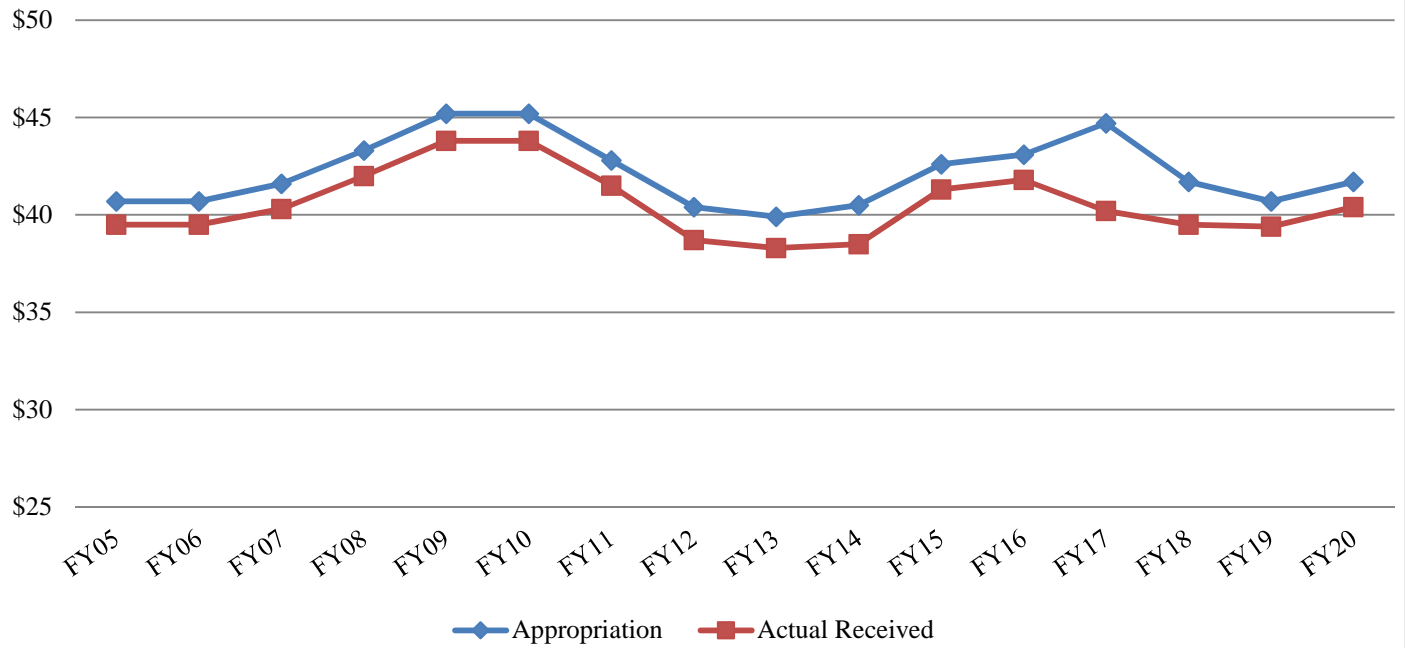


### Comparison of Annual Appropriation and Actual State Funds Received



	FY05	FY06	FY07	FY08	FY09	FY10	FY11	FY12	FY13	FY14	FY15	FY16	FY17	FY18	FY19	FY20
Appropriation	40.7	40.7	41.6	43.3	45.2	45.2	42.8	40.4	39.9	40.5	42.6	43.1	44.7	41.7	40.7	41.7
Actual Received	39.5	39.5	40.3	42.0	43.8	43.8	41.5	38.7	38.3	38.5	41.3	41.8	40.2	39.5	39.4	40.4

FY10 excludes one-time federal funds designed for Caring for Missourians.

FY17 is projected based on the standard 3% withholding, plus additional 8% withheld.

FY20 is projected based on the appropriation minus standard 3% withholding.