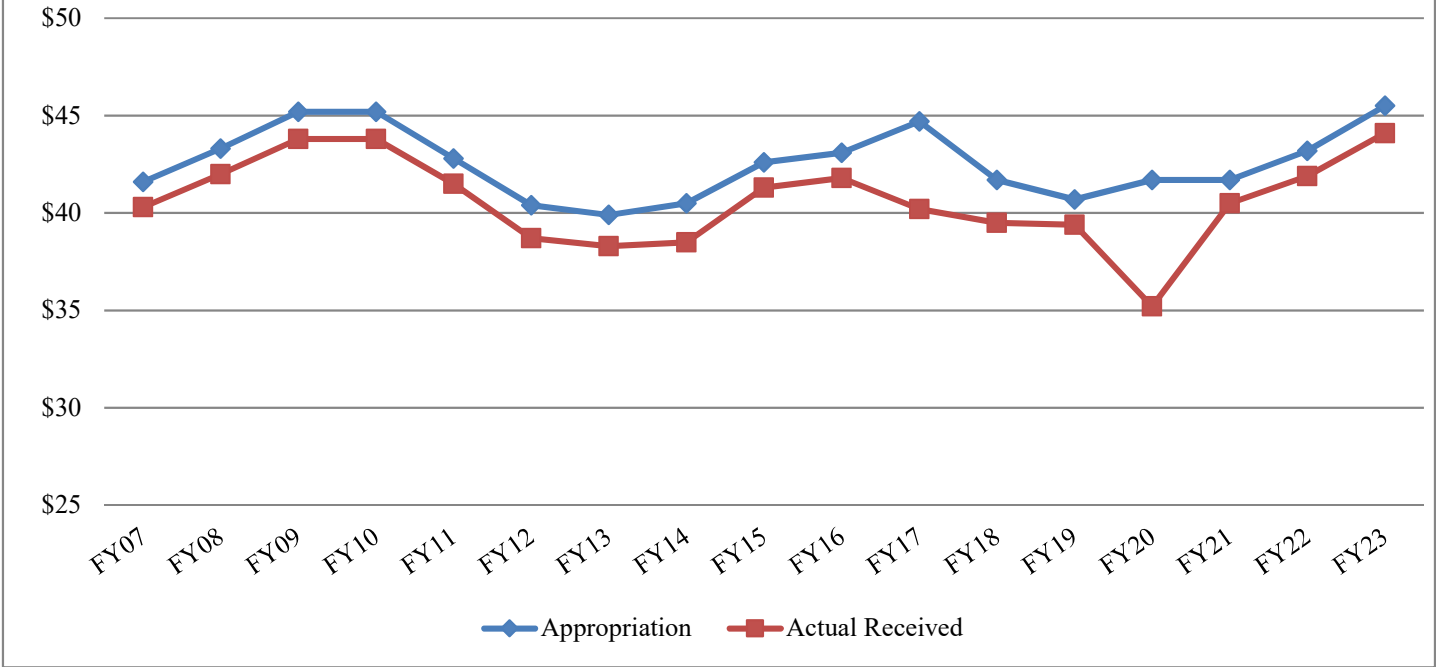


Comparison of Annual Appropriation and Actual State Funds Received



| | FY07 | FY08 | FY09 | FY10 | FY11 | FY12 | FY13 | FY14 | FY15 | FY16 | FY17 | FY18 | FY19 | FY20 | FY21 | FY22 | FY23 |
|-----------------|------|------|------|------|------|------|------|------|------|------|------|------|------|------|------|------|------|
| Appropriation | 41.6 | 43.3 | 45.2 | 45.2 | 42.8 | 40.4 | 39.9 | 40.5 | 42.6 | 43.1 | 44.7 | 41.7 | 40.7 | 41.7 | 41.7 | 43.2 | 45.5 |
| Actual Received | 40.3 | 42.0 | 43.8 | 43.8 | 41.5 | 38.7 | 38.3 | 38.5 | 41.3 | 41.8 | 40.2 | 39.5 | 39.4 | 35.2 | 40.5 | 41.9 | 44.1 |

FY10 excludes one-time federal funds designed for Caring for Missourians.

FY17 excludes one-time Autism Clinic funds and reflects extra withholding.

FY20 projected based on the appropriation minus standard withholding as of June 1.

FY21 projected based on actual FY20 appropriation minus standard 3% withholding.

FY23 projected based on Governor’s approved appropriation minus standard 3% withholding.